



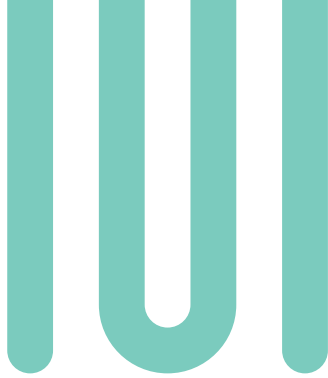
Mental Healthcare Matters Most

There is no health without mental health. To a large degree, the health of our population determines the health of our state and region. Last year, **nearly 30% of adults in New Hampshire reported symptoms of anxiety and depressive disorder.** These kinds of psychiatric illnesses are impacting us and the people we care about in painful, disabling, and, too often, deadly ways. As the incidence of psychiatric illness continues to escalate, there is a widening gap between the need for mental healthcare and the supply.

Recently, Dartmouth Health conducted a comprehensive community needs assessment. Regional respondents were asked to select the top 5 most pressing health needs or issues in the community from a list of 27 potential topics. For the people of New Hampshire and Vermont, access to **mental health is their number one concern.** For this reason, we must continue to pursue innovative, urgent approaches to intervention, treatment, and access.

Putting Mental Healthcare on the Map

With access to mental healthcare being such a huge concern for people throughout the region, Dartmouth Health is actively exploring opportunities to provide more to more people in more places. As we strive to meet this growing demand, we are leveraging our state-of-the-art academic medical science resources through a network of large and small, exceptionally qualified regional hospitals, clinics, and home health and hospice services—all deeply grounded in their respective communities. This evolving network of interconnected mental healthcare facilities and initiatives is increasingly well-positioned to address a broad spectrum of patients with diverse treatment needs.

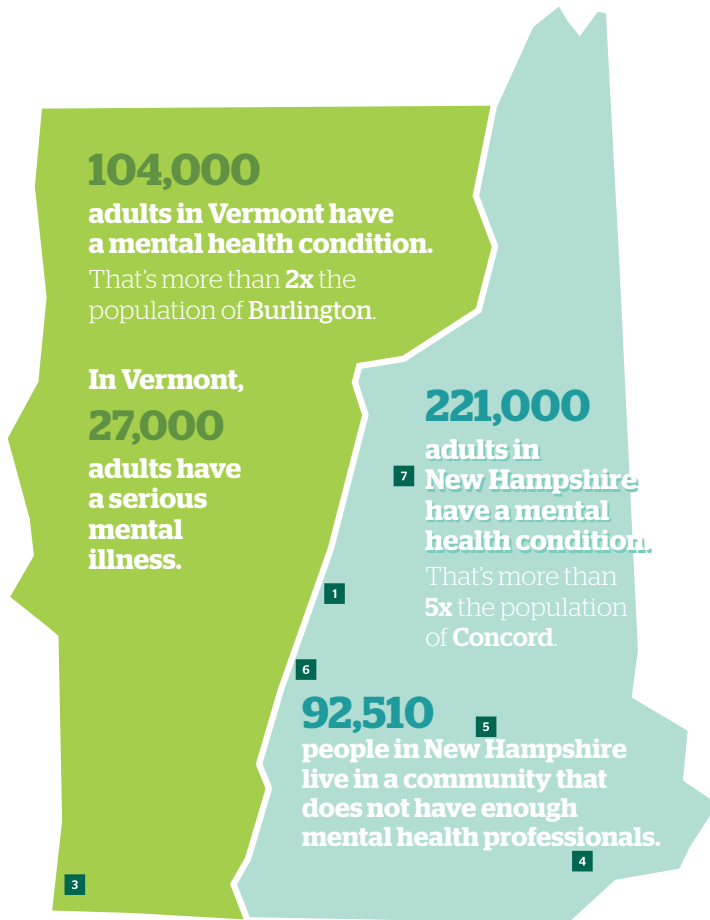


“ Nobody questions getting treatment for a broken leg, and yet, when someone gets treatment for depression, the reaction is not the same. We will know we have broken through the stigma of mental healthcare when we people react the same for someone taking time off work for a mental health issue as they would for surgery or cancer treatments. ”

— John T. Broderick, Jr.
Senior Director External
Affairs, Dartmouth Health



States of Despair: More Mental Healthcare Needed to Meet Growing Demand



National Alliance on Mental Illness (NAMI), "Mental Health in Vermont," 2021
National Alliance on Mental Illness (NAMI), "Mental Health in New Hampshire," 2021

1. Located on the DHMC campus, MHMH provides comprehensive psychiatry services in a clinical setting for adults and children. Our clinic sites are dedicated to training the next generation of clinicians while building knowledge through active research. [Department of Psychiatry | DHMC and Clinics \(dartmouth-hitchcock.org\)](https://www.dartmouth-hitchcock.org/department-of-psychiatry)
2. TelePsychiatry, a service of our Connected Care, can improve access to Board Certified psychiatrists who provide prompt 24/7/365 psychiatric consultations in the acute care setting. In the Emergency Dept or inpatient unit, TelePsychiatry enables psychiatrist assessment and triage to hospitals that do not have in-person physician coverage. [TelePsychiatry | Connected Care | DHMC and Clinics \(dartmouth-hitchcock.org\)](https://www.dartmouth-hitchcock.org/telepsychiatry)
3. From Southwest Vermont Medical Center in Bennington, Vermont, we are providing in-patient child psychiatric services to better serve our regional communities. [Home \(svhealthcare.org\)](https://www.svhealthcare.org)
4. Our most recent expansion of services involves our new staffing commitment at [Hampstead Hospital & Residential Treatment Facility | New Hampshire Department of Health and Human Services \(nh.gov\)](https://www.nh.gov). This 71-bed specialty hospital specializes in acute psychiatric and substance-related disorders and is uniquely focused on children, adolescents, and young adults.
5. As the premier acute psychiatric hospital in New Hampshire, [New Hampshire Hospital | New Hampshire Department of Health and Human Services \(nh.gov\)](https://www.nh.gov) is a 184-bed facility dedicated to adults with acute mental illness.
6. Valley Regional in Claremont, New Hampshire, is yet another example of Dartmouth Health's commitment to enhancing access to mental healthcare. [Quality Healthcare Specialists | Valley Regional Hospital \(vrh.org\)](https://www.vrh.org)
7. To meet the needs of older adults struggling with developmental disabilities and/or mental illness, The Glenclyff Home is in [Glenclyff, NH Glenclyff Home | New Hampshire Department of Health and Human Services \(nh.gov\)](https://www.nh.gov) provides long-term medical care in a supervised, safe, therapeutic environment.

Dartmouth Health, New Hampshire's only academic health system and the state's largest private employer, serves patients across northern New England. Dartmouth Health provides access to more than 2,000 providers in almost every area of medicine, delivering care at its flagship hospital, Dartmouth Hitchcock Medical Center (DHMC) in Lebanon, NH, as well as across its wide network of hospitals, clinics and care facilities. DHMC is consistently named the #1 hospital in New Hampshire by U.S. News & World Report, and is recognized for high performance in numerous clinical specialties and procedures. Dartmouth Health includes Dartmouth Cancer Center, one of only 56 National Cancer Institute-designated Comprehensive Cancer Centers in the nation, and the only such center in northern New England; Dartmouth Health Children's, which includes the state's only children's hospital and multiple locations around the region; member hospitals in Lebanon, Keene and New London, NH, and Windsor and Bennington, VT; Visiting Nurse and Hospice for Vermont and New Hampshire; and more than 30 clinics that provide ambulatory and specialty services across New Hampshire and Vermont. Through its historical partnership with Dartmouth and the Geisel School of Medicine, Dartmouth Health trains nearly 400 medical residents and fellows annually, and performs cutting-edge research and clinical trials recognized across the globe with Geisel and the White River Junction VA Medical Center in White River Junction, VT. Dartmouth Health and its more than 15,000 employees are deeply committed to serving the healthcare needs of everyone in our communities, and to providing each of our patients with exceptional, personal care.