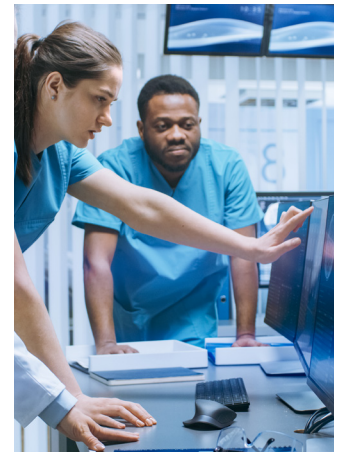




Of the roughly **1,700**
teaching hospitals in the
United States, only
220 are designated as
academic medical centers.



Academic Medical Center

Academic Medicine is Smart Medicine

Dartmouth Health is an integrated system of community hospitals, clinics and healthcare services across New Hampshire and Vermont. Dartmouth Hitchcock Medical Center is the state's only academic medical center. Combined with Dartmouth Hitchcock Clinics these facilities provide primary and specialty care throughout the region. Our physicians and researchers collaborate with Geisel School of Medicine scientists and faculty as well as other leading health care organizations to develop new treatments at the leading edge of medical practice bringing the latest medical discoveries to the patient.

Through our affiliation with Geisel School of Medicine at Dartmouth, we represent one of only 220 academic medical centers in the nation and we are one of the most rural. As New Hampshire's only academic medical center, we train many of the best and brightest medical minds. This distinguishing designation provides our patients with access to world-class care and medical breakthroughs. Academic medical centers like Dartmouth Hitchcock Medical Center have a unique ability to advance the individual health needs of patients while simultaneously advancing medical research.

Clinical Excellence

Our reputation is rooted in deep ties to Geisel School of Medicine at Dartmouth and the NCI-designated Comprehensive Dartmouth Cancer Center. Advanced clinical trials and medical science are performed at our academic medical center—Dartmouth Hitchcock Medical Center. These partnerships allow us to apply the most robust level of medical expertise available throughout our healthcare system. Together, we work seamlessly to provide state-of-the-art science to the individual needs of our patients.

Advantages of Access to World Class Care

One of the key markers for the quality of life in any community is access to exceptional healthcare. In academic medical centers, patient care is inherently improved thanks to better-trained, continually educated physicians and advanced

(continued)

practice providers who have access to the latest advances in their respective medical field. When it comes to critical care, throughout northern New England, people have come to rely on Dartmouth Health's designation as the only Level I Trauma Center in New Hampshire. Level 1 means that DHMC provides the highest level of trauma care to critically ill or injured patients and indicates that a facility has research and teaching facilities as well. With such highly-specialized care, we offer the most comprehensive approach to trauma patients—from injury through rehabilitation—including 24-hour in-hospital access to general surgeons.

Welcoming Collaboration

The goal of academic medicine is to ultimately improve the health and well-being of individuals and populations. Through the discovery and development of principles, policies, and best practices that advance evidence-based research and education in the health sciences, we take a collaborative approach to patient care. Not only at DHMC, but throughout Dartmouth Health, the best care plans for our patients are determined by a whole team of experienced doctors.

Community Commitment

As New Hampshire's only academic health system, Dartmouth Health continues to set new standards of care—offering world-class, comprehensive care close to home. Last year, Dartmouth Health's Dartmouth Hitchcock Medical Center (DHMC), was named to Becker's Hospital Review's annual ranking of Great Hospitals in America in addition to being named New Hampshire's Best Hospital year-after-year by U.S. News & World Report. DHMC was one of only three hospitals in New England included on the Becker's list, and the only hospital in New Hampshire and northern New England.

Hospitals included on lists such as these are renowned for clinical excellence, patient safety, innovation efforts, research and education, patient satisfaction and more. National organizations recognized these hospitals for their leadership in the industry and their excellence in several specialties. Hospitals acknowledged on this list are leaders in healthcare who contribute to breakthroughs and discoveries that impact the future of medicine, and their expertise benefits not only the communities they serve, but also healthcare in general.

Q & A

What is a resident at a hospital?

A resident doctor is a medical school graduate and doctor in training who's taking part in a graduate medical education (GME) program. Graduate Medical Education is the phase of formal medical education beginning at graduation from medical school and ending after the educational requirements for one of the medical specialty certifying boards have been completed. The goal is to prepare physicians for the independent practice of medicine.

Does Dartmouth Hitchcock Medical Center have a residency program?

Dartmouth Hitchcock Medical Center (under the license of Mary Hitchcock Memorial Hospital) is the sponsoring institution for our 52 Accreditation Council for Graduate Medical Education-accredited residency and fellowship programs. Cheshire Medical Center is now a sponsoring institution for a new residency in Family Medicine.

What is the purpose of a medical fellowship?

A medical fellowship is the training medical school graduates receive after completing their residency to become a specialist in their chosen field of medicine. Fellows may carry out research in a Geisel School of Medicine research laboratory and work closely with a specialist to deepen their experience and knowledge of their subspecialty.

How is a residency program accredited?

Programs are accredited by the Accreditation Council for Graduate Medical Education (ACGME), which, in turn, acts on the recommendations of 26 Residency Review Committees (RCs), each of which serves a medical or surgical specialty. Specialty certifying boards establish the educational criteria that residents must achieve to be eligible for board certification. These criteria include the length of time for education and training and, to a significant degree, the content of the training program.

What are the responsibilities of a sponsoring institution?

As the sponsoring institutions for GME, Mary Hitchcock Memorial Hospital and the integrated partners comprising Dartmouth Hitchcock Medical Center commit to ensuring that all ACGME-accredited programs remain in substantial compliance with the ACGME's institutional and program-specific requirements. Furthermore, we strive for continuous improvement in the effectiveness of all its GME programs via ongoing assessment of educational and medical practice. In this way, we lead transformation of graduate medical education in our region, help set new standards at the national level, and support our vision of achieving the healthiest population possible.